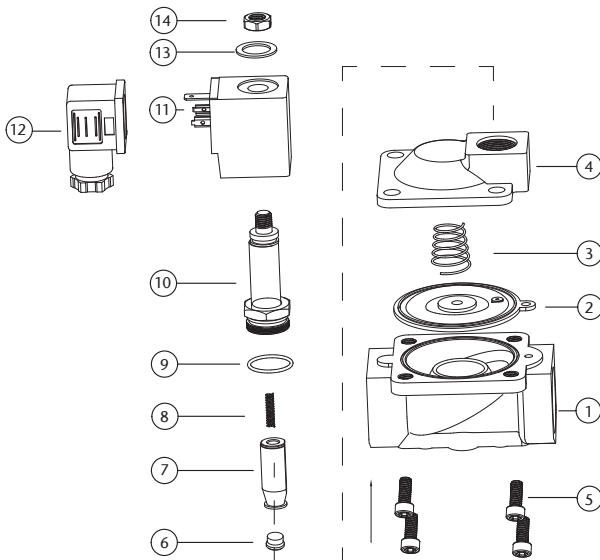


### Parts Diagram



N.	Component	Material
1	Valve Body	Brass/Stainless Steel 316
2	Diaphragm	NBR/EPDM/Viton
3	Diaphragm Spring	Stainless Steel 304
4	Valve Cover	Brass/Stainless Steel 316
5	Bolt	Stainless Steel 302
6	Pilot Seal	NBR/EPDM/Viton
7	Pilot	Stainless Steel 1J117
8	Pilot Spring	Stainless Steel 304
9	O Ring	NBR/EPDM/Viton
10	Plunger Tube Unit	Stainless Steel 304 + 1J117
11	Coil	Enamelled Wire
12	Plug	Nylon
13	Washer	Stainless Steel 302
14	Lock Nut	Stainless Steel 302

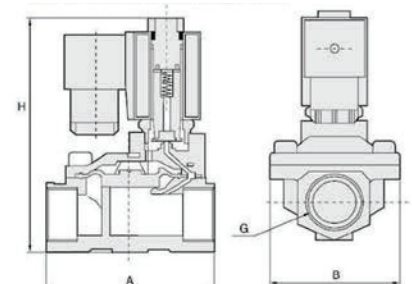
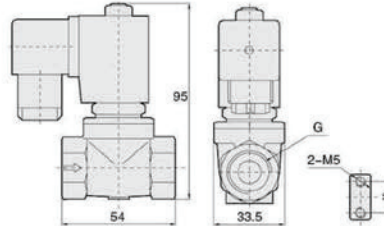
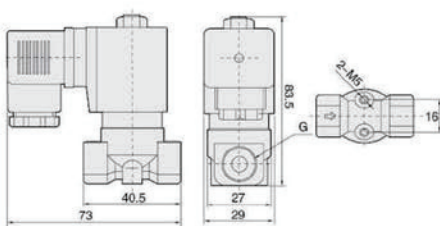
Available in 240VAC, 110VAC  
12VDC, 24VDC, 24VAC

### Main Dimensions

Orifice: 3mm & 4mm  
Port: 1/8", 1/4" & 3/8"

Orifice: 10.5mm  
Port: 1/4", 3/8" & 1/2"

Large Orifice  
See Table opposite



# 2/2 Solenoid Valve Normally Closed

## Valve Specification & Order Code

Port Size (G)	Orifice	CV Value	Pressure Difference (Bar)				Max. Temp. (°C)	VA AC 220V	W DC 24V	220VAC 50/60Hz		Main Dimension AxBxH
			Min.	Max. Working Pressure						Brass	316 Stainless Steel	
				Air / Gas	Water / Hot Liquid	Light Oil ≤20CST						
1/8"	3	0.23	0	13	13	10	80	22	13	SLP06E2-3L	SLP06E2-3LS1	-
	3	0.23	0	13	13	-	120	22	13	SLP06EE2-3L	SLP06EE2-3LS1	-
	3	0.23	0	13	13	10	120	22	13	SLP06VE2-3L	SLP06VE2-3LS1	-
1/4"	3	0.23	0	13	13	10	80	22	13	SLP08E2-3L	SLP08E2-3LS1	-
	3	0.23	0	13	13	-	120	22	13	SLP08EE2-3L	SLP08EE2-3LS1	-
	3	0.23	0	13	13	10	120	22	13	SLP08VE2-3L	SLP08VE2-3LS1	-
10.5	10.5	1.47	0	16	16	13	80	22	13	SLP08E2-10.5L	-	-
	10.5	1.47	0	16	16	-	120	22	13	SLP08EE2-10.5L	-	-
	10.5	1.47	0	16	16	13	120	22	13	SLP08VE2-10.5L	-	-
3/8"	3	0.3	0	13	13	10	80	22	13	SLP10E2-3L	SLP10E2-3LS1	-
	3	0.3	0	13	13	10	120	22	13	SLP10EE2-3L	SLP10EE2-3LS1	-
	3	0.3	0	13	13	10	120	22	13	SLP10VE2-3L	SLP10VE2-3LS1	-
4	4	0.6	0	8	8	6	80	22	13	SLP10E2-4L	SLP10E2-4LS1	-
	4	0.6	0	8	8	6	120	22	13	SLP10EE2-4L	SLP10EE2-4LS1	-
	4	0.6	0	8	8	6	120	22	13	SLP10VE2-4L	SLP10VE2-4LS1	-
10.5	10.5	1.68	0	16	16	13	80	22	13	SLP10E2-10.5L	-	-
	10.5	1.68	0	16	16	-	120	22	13	SLP10EE2-10.5L	-	-
	10.5	1.68	0	16	16	13	120	22	13	SLP10VE2-10.5L	-	-
13	13	4.5	0.5	16	16	13	80	22	13	SLP10E2-13L	SLP10E2-13LS1	66x48x112
	13	4.5	0.5	16	16	13	120	22	13	SLP10EE2-13L	SLP10EE2-13LS1	66x48x112
	13	4.5	0.5	16	16	13	120	22	13	SLP10VE2-13L	SLP10VE2-13LS1	66x48x112
1/2"	10.5	1.75	0	16	16	13	80	22	13	SLP15E2-10.5L	-	-
	10.5	1.75	0	16	16	-	120	22	13	SLP15EE2-10.5L	-	-
	10.5	1.75	0	16	16	13	120	22	13	SLP15VE2-10.5L	-	-
13	13	4.5	0.5	16	16	13	80	22	13	SLP15E2-13L	SLP15E2-13LS1	66x48x112
	13	4.5	0.5	16	16	13	120	22	13	SLP15EE2-13L	SLP15EE2-13LS1	66x48x112
	13	4.5	0.5	16	16	13	120	22	13	SLP15VE2-13L	SLP15VE2-13LS1	66x48x112
3/4"	20	7.6	0.5	16	16	13	80	22	13	SLP-20E2	SLP-20E2S1	75x58x118
	20	7.6	0.5	16	16	13	120	22	13	SLP-20EE2	SLP-20EE2S1	75x58x118
	20	7.6	0.5	16	16	13	120	22	13	SLP-20VE2	SLP-20VE2S1	75x58x118
1"	25	12	0.5	16	16	13	80	22	13	SLP-25E2	SLP-25E2S1	96x70x131
	25	12	0.5	16	16	13	120	22	13	SLP-25EE2	SLP-25EE2S1	96x70x131
	25	12	0.5	16	16	13	120	22	13	SLP-25VE2	SLP-25VE2S1	96x70x131
1.1/4"	35	22	0.5	16	16	13	80	22	13	SLP-35E2	SLP-35E2S1	131x96x146
	35	22	0.5	16	16	13	120	22	13	SLP-35EE2	SLP-35EE2S1	131x96x146
	35	22	0.5	16	16	13	120	22	13	SLP-35VE2	SLP-35VE2S1	131x96x146
1.1/2"	40	30	0.5	16	16	13	80	22	13	SLP-40E2	SLP-40E2S1	131x96x146
	40	30	0.5	16	16	13	120	22	13	SLP-40EE2	SLP-40EE2S1	131x96x146
	40	30	0.5	16	16	13	120	22	13	SLP-40VE2	SLP-40VE2S1	131x96x146
2"	50	48	0.5	16	16	13	80	22	13	SLP-50E2	SLP-50E2S1	165x120x167
	50	48	0.5	16	16	13	120	22	13	SLP-50EE2	SLP-50EE2S1	165x120x167
	50	48	0.5	16	16	13	120	22	13	SLP-50VE2	SLP-50VE2S1	165x120x167
1" Flange Connection	25	12	0.5	16	16	13	80	22	13	-	SLPFE2-25LS1	134x110x160
	25	12	0.5	16	16	13	120	22	13	-	SLPFEE2-25LS1	134x110x160
	25	12	0.5	16	16	13	120	22	13	-	SLPFVE2-25LS1	134x110x160
1 1/4" Flange Connection	35	22	0.5	16	16	13	80	22	13	-	SLPFE2-35LS1	160x135x175
	35	22	0.5	16	16	13	120	22	13	-	SLPFEE2-35LS1	160x135x175
	35	22	0.5	16	16	13	120	22	13	-	SLPFVE2-35LS1	160x135x175
1 1/2" Flange Connection	40	30	0.5	16	16	13	80	22	13	-	SLPFE2-40LS1	160x145x180
	40	30	0.5	16	16	13	120	22	13	-	SLPFEE2-40LS1	160x145x180
	40	30	0.5	16	16	13	120	22	13	-	SLPFVE2-40LS1	160x145x180
2" Flange Connection	50	48	0.5	12	12	13	80	22	13	-	SLPFE2-50LS1	200x160x207
	50	48	0.5	12	12	13	120	22	13	-	SLPFEE2-50LS1	200x160x207
	50	48	0.5	12	12	13	120	22	13	-	SLPFVE2-50LS1	200x160x207
2 1/2" Flange Connection	65	52	0.5	12	12	8	80	33	20	-	SLPFE2-65LS1	250x185x250
	65	52	0.5	12	12	8	120	33	20	-	SLPFEE2-65LS1	250x185x250
	65	52	0.5	12	12	8	120	33	20	-	SLPFVE2-65LS1	250x185x250
3" Flange Connection	80	80	0.5	12	12	8	80	33	20	-	SLPFE2-80LS1	270x202x262
	80	80	0.5	12	12	8	120	33	20	-	SLPFEE2-80LS1	270x202x262
	80	80	0.5	12	12	8	120	33	20	-	SLPFVE2-80LS1	270x202x262
4" Flange Connection	100	128	0.5	12	12	8	80	33	20	-	SLPFE2-100LS1	342x222x287
	100	128	0.5	12	12	8	120	33	20	-	SLPFEE2-100LS1	342x222x287
	100	128	0.5	12	12	8	120	33	20	-	SLPFVE2-100LS1	342x222x287

DMS Metering Solutions  
X-Cel House, Chrysalis Way  
Langley Bridge, Eastwood  
NG16 3RY

Tel.: 01773 534555  
Fax: 01773 534666  
Email: sales@dmsltd.com  
Web: www.dmsltd.com

Dimensions in mm

This data sheet is designed as a guide and should not be regarded as wholly accurate in every detail. We reserve the right to amend the specification of any product without notice.