

H5000 Hybrid
Woltmann meter

DMS
METERING
SOLUTIONS



elster

H5000 Woltmann cold water meter

The H5000 is a Woltmann-type meter designed for measuring bulk flows of cold potable water for revenue billing in commercial or industrial applications and distribution system monitoring

Key features

- Wide measuring range approved up to 2000:1
- Retro-fit mechanism into the H4000 body
- Uses innovative measuring technology
- Electronic register includes an integrated communications cable
- Electronic register pre-equipped for AMR/AMI with pulse, encoder, Aquabus, M - Bus, L - Bus outputs
- Value adding AMR/AMI style features such as flow rate display, data-logging, leak detection, tamper alarms and tariffing
- Approved to the latest European Directive 2004/22/EC



H5000 applications

H5000 is the next generation of Woltmann (turbine) bulk water meter from Elster. With a range of important features, H5000 represents the very highest performance in bulk flow water metering making it ideally suited to both billing and water distribution applications. Available in seven sizes from DN40 to DN150 for flow rates between 40 l/h and 200 m³/h, the H5000 operates at temperatures up to 50°C and a maximum working pressure of 16 bar.

The H5000 meter has an advanced electronic register which includes integrated communications covering a range of industry standard outputs compatible with common AMR/AMI systems and data-logging equipment.



H5000 measuring range

H5000 has the widest measuring range of any metering technology with a single measuring element. With low-flow that almost matches combination meters, H5000 provides a metrological performance that ensures nearly every drop is measured. With an unrivalled measuring range up to 2000:1 this also simplifies meter selection and reduces inventory.



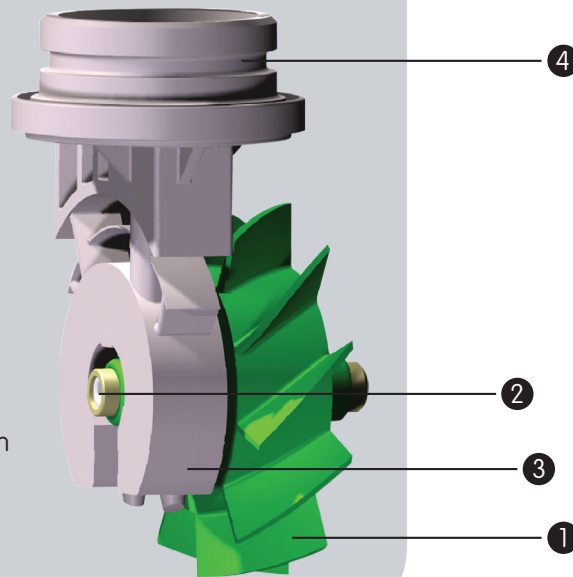
Ease of installation

H5000 uses the same body as Elster's industry leading H4000 Woltmann meter, providing simple, cost effective change-out of existing meter stocks. For new meters, the H5000 is available in both ISO (WP) and DIN (WS) lengths. The meter can also be installed in any orientation without any loss of metering accuracy.

Key features

- 1 All new rotor design with enhanced, patented* hydrodynamic and sensing features
- 2 Rotor spindle with inductive sensing pads and no wet gearing
- 3 Inductive sensors in a sealed and potted housing
- 4 Secure, waterproof connection to electronic register

* patents pending

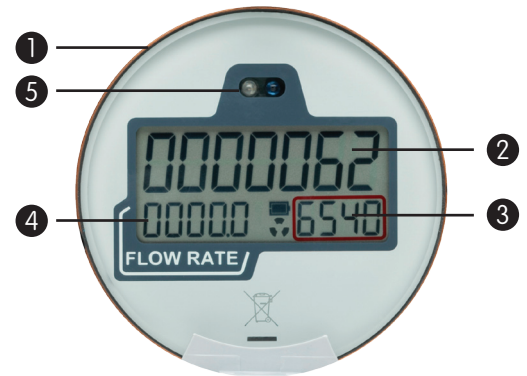


Innovative measuring technology

H5000 features an all-new rotor design combined with long-proven sensor technology to maximise measuring range. Just a single moving part improves sensitivity, durability and maintains longevity even at the highest flow rates.

C&I inductive register

- 1 Hermitically sealed, mineral glass register prevents moisture and water ingress from damaging the electronics and ensures good visibility
- 2 Large, 12mm high index reading up to seven digits are clearly distinct to aid visual readings and avoid data errors
- 3 Sub-units (decimals), clearly segregated by a red box. These units provide additional resolution for verification
- 4 Real-time flow rate display, avoids the need to make manual calculations based on pointers
- 5 I/R interface for factory communication, in-situ upgrades and additional communication devices

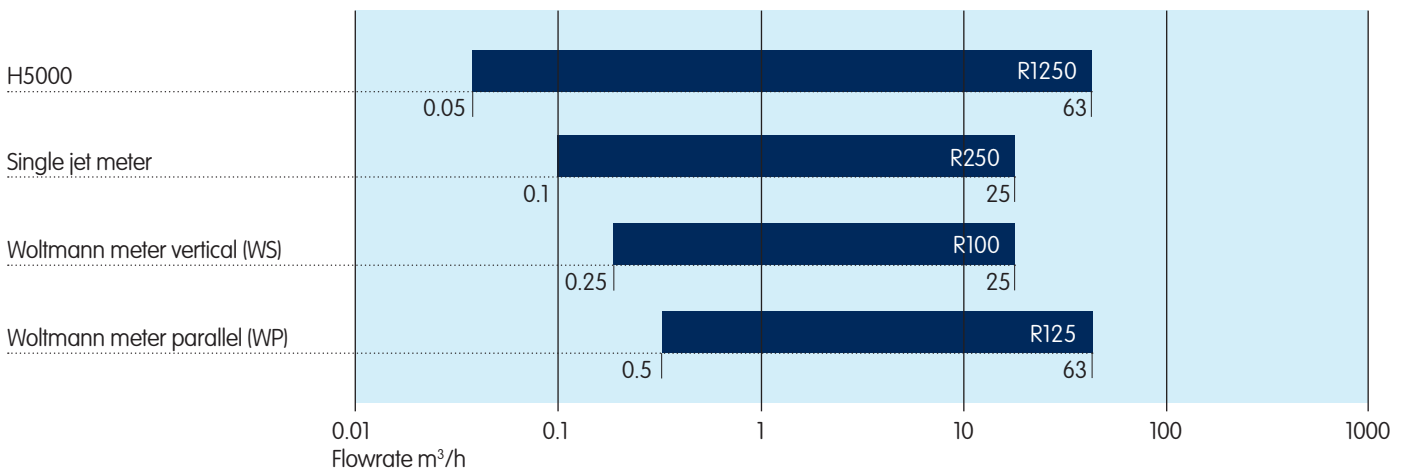


Communications

H5000's electronic register includes an integrated communications cable (no need to purchase separate modules) with a range of industry standard outputs compatible with common AMR/AMI systems and data-logging equipment. H5000's electronic register is self powered by internal batteries with a typical lifetime of 15 years*. The large, clear display provides valuable additional information to support a range of activities

* Actual battery life depends on ambient temperature and flow profile

Comparison at measuring ranges (DN50)



About Elster Group

A world leader in advanced metering infrastructure, integrated metering, and utilisation solutions to the gas, electricity and water industries, Elster's systems and solutions reflect over 170 years of knowledge and experience in measuring precious resources and energy. Elster provides solutions and advanced technologies to help utilities more easily, efficiently and reliably obtain and use advanced metering intelligence to improve customer service, enhance operational efficiency, and increase customer benefits.

Elster's AMI solutions enable utilities to cost-effectively deliver, manage, and conserve the life-essential resources of gas, electricity, and water. Elster has over 7500 staff and operations in 38 countries in North and South America, Europe, and Asia. For additional information, visit www.elster.com

WEEE producer identification number: WEE/EJ0221XT/PRO



www.elstermetering.com

Contacts

DMS Metering Solutions
X-Cel House
Chrysalis Way
Langley Bridge
Eastwood
NG16 3RY

Tel.: 01773 534555
Fax: 01773 534666
Email: sales@dmsltd.com
Web: www.dmsltd.com

© 2014 by Elster Water Metering Ltd. All rights reserved. The company's policy is one of continuous product improvement and the right is reserved to modify the specifications contained herein without notice.

Lit Ref: 8514B4272